

North Texas Native & Adaptable Plants

The Horticultural Forecast – Training Series

Planning | Observing | Training | Communicating



SIMPLY HORTICULTURE

Simply Horticulture Team

- Landscape Management
- Irrigation & Drainage
- Plant Healthcare
- Tree Care
- Arboricultural & Horticultural Consulting & Design Services
- Tree Survey



Speakers Background

- President of Simply Horticulture
- Immediate Past President of the International Society of Arboriculture – Texas Chapter
- Started in the Horticulture industry in 1998
- B.S. Agronomy-Horticulture from SFASU
- ISA Board Certified Master Arborist TX-3917B
- ASCA Consulting Arborist
- Tree & Plant Appraisal Qualified
- Prescription Pruning Qualified
- Texas Oak Wilt Qualified #123
- Tree Risk Assessment Qualified
- TDA Commercial Pesticide Applicator #665452
- TCEQ Licensed Irrigator #19258
- Certified Landscape Irrigation Auditor
- Wildfire Risk Reduction Qualified #136





Purpose

The Horticultural Forecast – a training series that allows us to use scientific research to implement good horticultural practices.

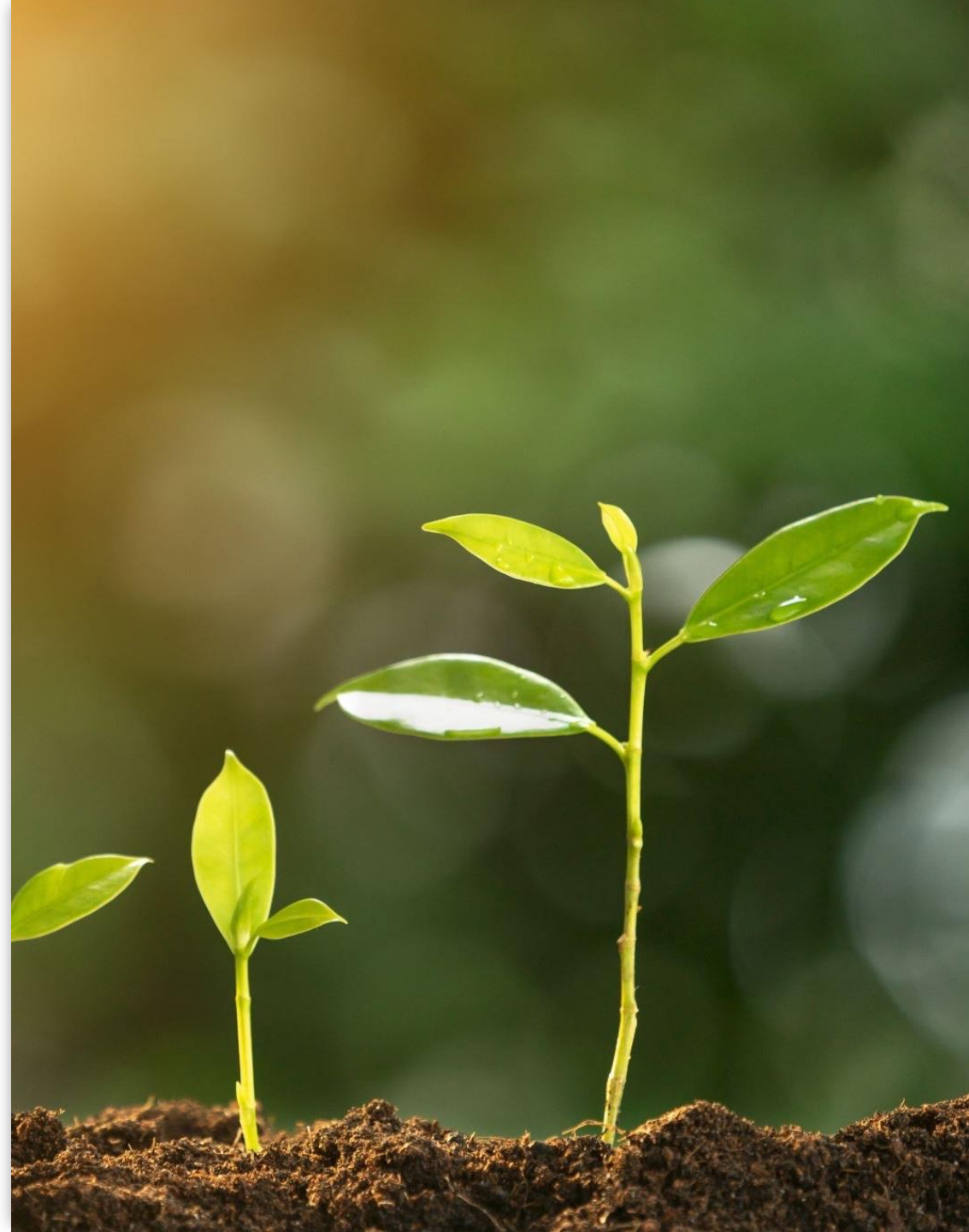
Goals for today's presentation

- Preparation and planting practices.
- Native and adaptable plant species.
- Establishing new landscapes in existing landscape systems.

Site Assessment & Plant Selection

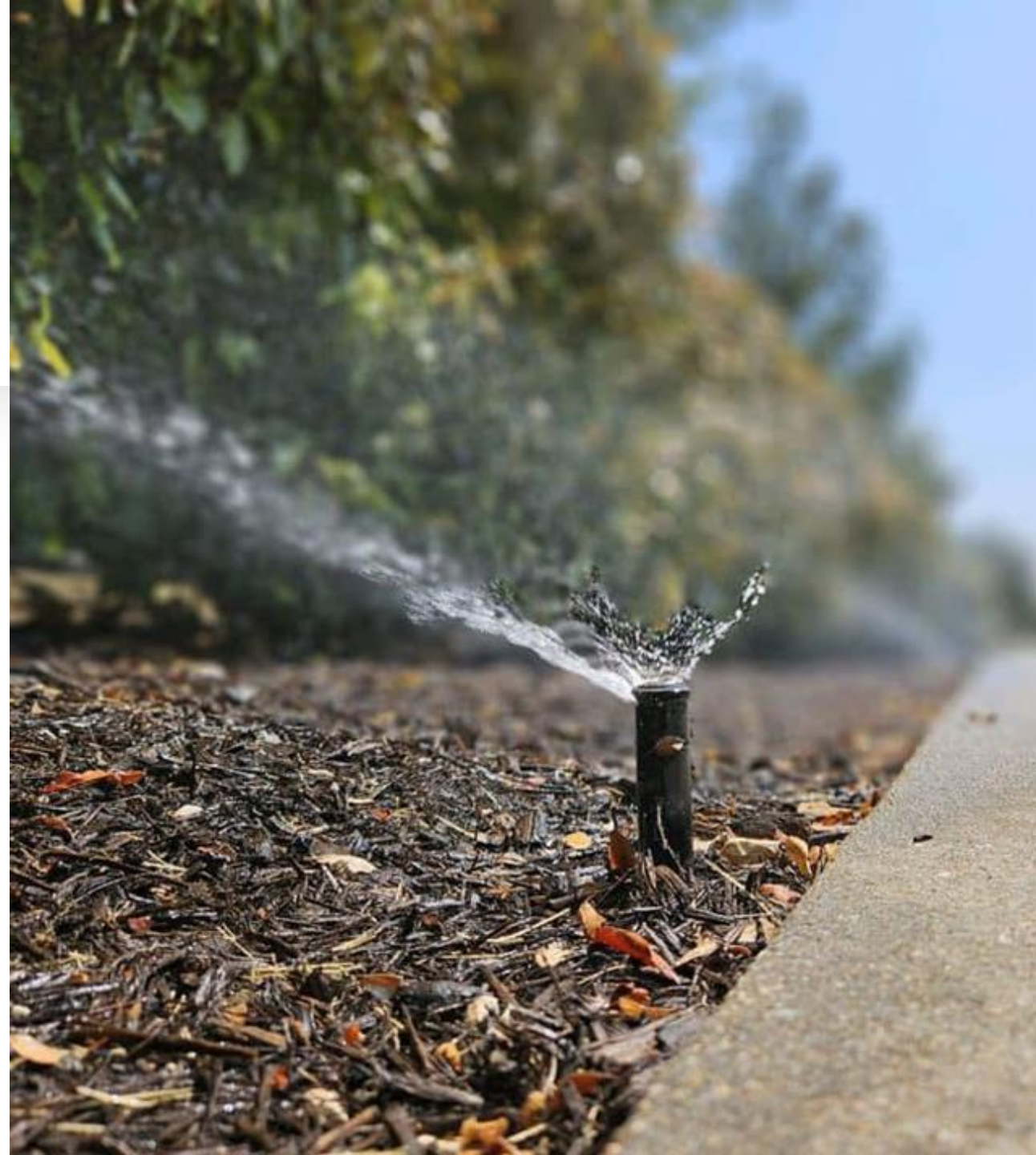
Prior to installing a new landscape, it is important to perform a pre-planting site assessment.

- #1 – Perform an irrigation inspection and performance audit
- #2 – Assess soil quality and health
- #3 – Evaluate topography and exposure
- #4 – Determine planting objectives
- #5 – Create a tree preservation plan for existing trees
- #6 – Develop a list of desirable native and adaptable plant species



Irrigation Inspection & Performance Audits

- New landscaping in existing landscape systems will require irrigation modification.
- Proper hydro-zoning will help ensure that new landscapes are able to establish without overwatering existing landscapes.



Soil Health Indicators

Excavating a small pit in several areas in the planting areas will help the landscape designer determine if the soil is healthy. Soils with good health indicators are prime sites for new landscapes.

Incorporating the appropriate soil amendments can improve establishment rates.





Topography and Exposure

Planting Objectives



What are your planting objectives?

- Screening for privacy
- Reducing urban heat island
- Developing a sustainable landscape
- Mitigating erosion
- Developing a natural space with color and a diverse ecosystem
- Building a beautiful garden for entertaining
- Creating a usable space for residential activities



Tree Preservation

- If considering a major landscape renovation or other activity that will require plantings inside the critical root zone of a tree, contract a Certified Arborist to assess the health of your trees, and perform treatments if needed to prepare for soil disturbances.



Proper Hydrozoning and Preventative Care





Plant Selection



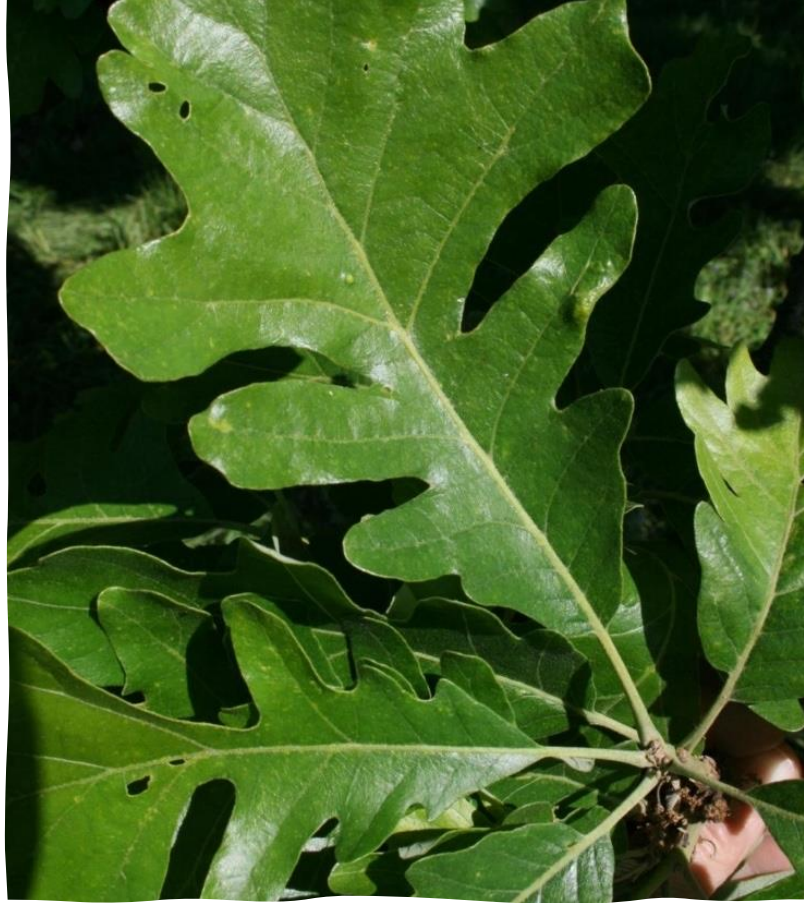


Beautiful Gardens require water to sustain. Drip irrigation, hand water, and additional care is required.

Our Favorite Native & Adaptable Trees

- Bur Oak (*Quercus macrocarpa*)
- Chinquapin Oak (*Quercus muehlenbergii*)
- Escarpment Oak (*Quercus fusiformis*)
- Lacey Oak (*Quercus laceyi*)
- Cedar Elm (*Ulmus crassifolia*)
- Shumard Oak (*Quercus shumardii*)
- Monterrey Oak (*Quercus polymorpha*)
 - Some concerns on cold tolerances
- Chinese Pistache (*Pistacia chinensis*)
 - Females can be invasive
- Redbud (*Cercis canadensis*)
- Mexican Plum (*Prunus mexicana*)
- Crapemyrtle (*Lagerstroemia indica*)
- Japanese Maples (*Acer palmatum*)
- Roughleaf Dogwood (*Cornus drummondii*)
- Eastern Redcedar and Taylor Juniper (*Juniperus virginiana*)
- October Glory Maple (*Acer rubrum*)
- Caddo Maple (*Acer saccharum* 'Caddo')





Bur Oak

- This tree is a large stature tree that is long-lived, and drought resistant white oak native to North America. This tree has large, fringed acorns, deep furrowed bark, and a widespread canopy.

70-100 ft tall at maturity



Chinquapin Oak – durable, medium to large deciduous shade tree native to North America. 40-60 ft at maturity.

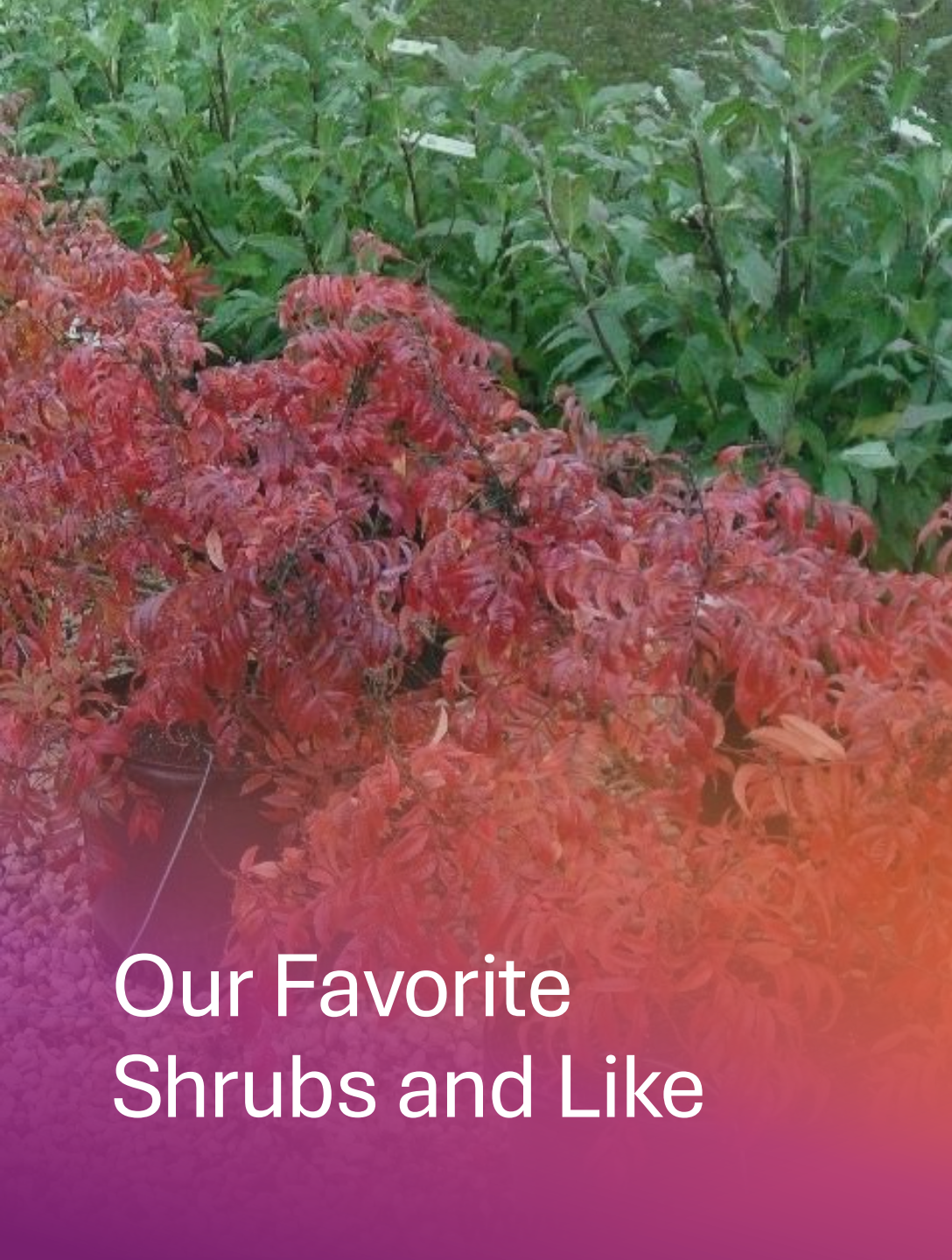


Lacey Oak

Small to medium size deciduous tree with a blue-gray foliage. This tree is genetically designed for extreme conditions. 25-35 ft tall at maturity.

Mexican Plum is a deciduous native to central US and N Mexico. Extreme drought tolerance with fragrant blooms. 15-25 ft tall at maturity.





Our Favorite Shrubs and Like

- Texas Sage
- Red Yucca
- Soft Leaf Yucca
- Agave
- Dwarf Yaupon
- Needlepoint Holly
- Eagleston Holly
- Nandina
- Abelia
- Barberry
- Flame Sumac
- Loropetalum



Red Yucca



Texas Sage 'Green Cloud'





Needlepoint Holly



Eagleston Holly



Abelia 'Glossy'

Semi-evergreen shrub 4-6 ft tall



Barberry
'Crimson
Dwarf Pigmy'



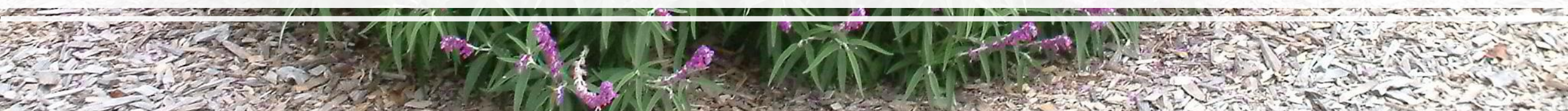


Perennials

- Autumn Sage
- Mexican Bush Sage
- Lantana
- Texas Rock Rose
- Turk's Cap
- Black Eye Susan
- Catmint
- Coneflower
- Phlox
- Daylily
- Salvia
- Butterfly Bushy
- Yellow Yarrow



Mexican Bush Sage



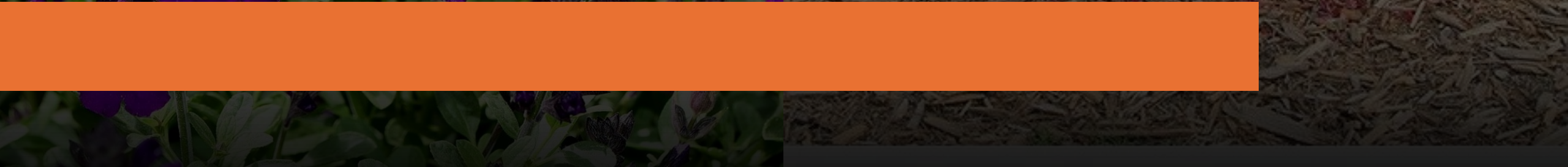


Buttefly Bush





Autumn Sage





Yellow Yarrow



Coreopsis





Turk's Cap





Groundcovers

- Purple Wintercreeper
- Asian Jasmine
- Carex/Sedges
- Liriope
- Texas Frogfruit
- Creeping Jenny
- Woolly Stemoda
- Ajuga
- Ivy



Berkley Sedge



A photograph of a garden bed covered in Purple Winter Creeper. The ground cover is a dense, low-growing plant with small, rounded leaves, appearing in shades of green and purple. It is planted in a garden bed with other plants and trees in the background. The text "Purple Winter Creeper" is overlaid in white on the image.

Purple Winter Creeper



Ajuga

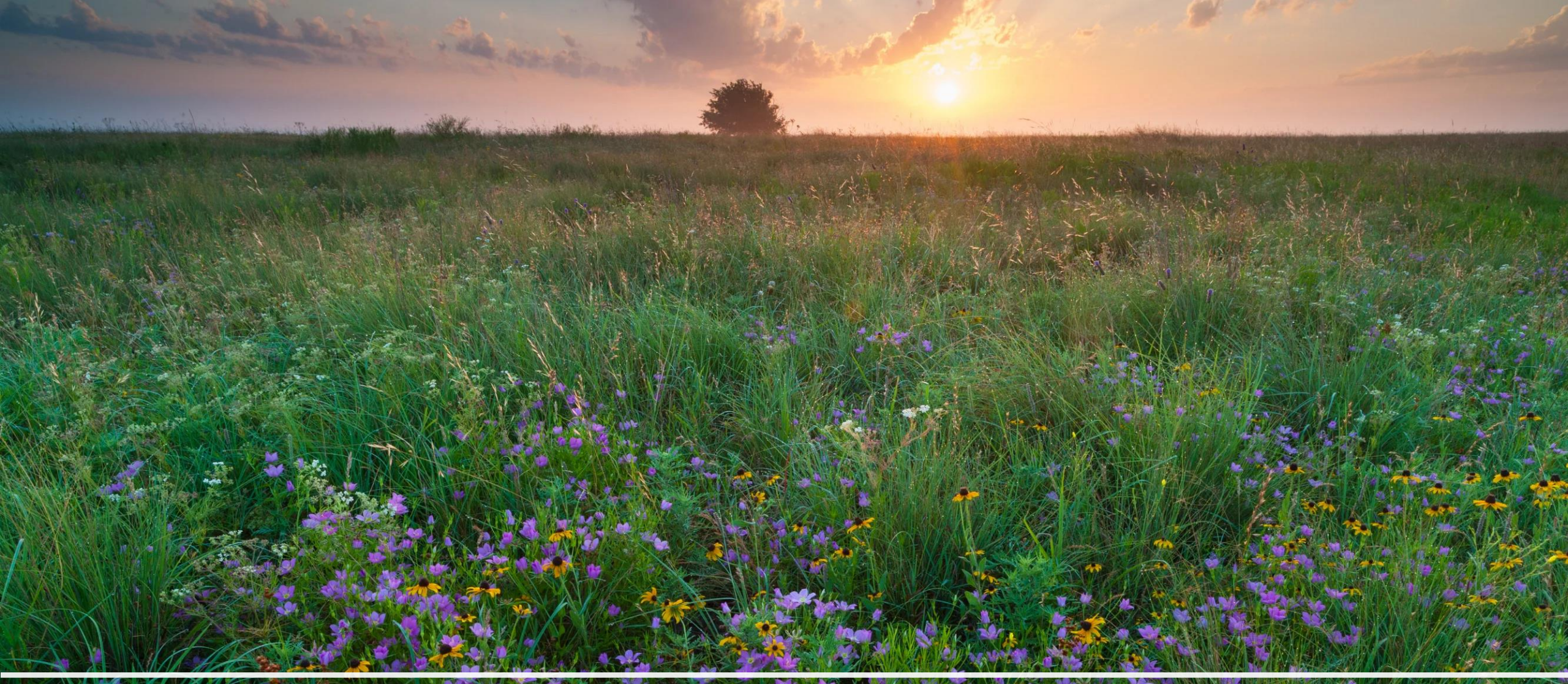


Creeping Jenny

A wide-angle photograph of a prairie field filled with a variety of wildflowers, including purple thistles and yellow and brown flowers. The field stretches to a line of trees in the distance under a grey, overcast sky. The text is overlaid on the center of the image.

Other Water Wise Decisions

Prairie land restoration



Blackland Prairie Mix



- AMERICAN BASKETFLOWER
- BUFFALOGRASS
- EASTERN GAMAGRASS
- ILLINOIS BUNDLEFLOWER
- LANCELEAF COREOPSIS
- MEALY BLUE SAGE
- PLAINS COREOPSIS
- PURPLE PRAIRIE CLOVER
- SAND LOVEGRASS
- SPIDERWORT
- SWITCHGRASS
- TEXAS CUPGRASS
- WHITE ROSINWEED
- BIG BLUESTEM
- BUTTERFLY WEED
- ENGELMANN'S DAISY
- INDIAN BLANKET
- LEMON MINT
- PARTRIDGE PEA
- PRAIRIE GOLDENROD
- PURPLETOP
- SHOWY MILKWEED
- STANDING CYPRESS
- TALL DROPSEED
- TEXAS YELLOW STAR
- WINECUP - ANNUAL
- BLACK-EYED SUSAN
- CANE BLUESTEM
- GREEN SPRANGLETOP
- INDIANGRASS
- LITTLE BLUESTEM
- PINK EVENING PRIMROSE
- PRAIRIE VERBENA
- RATTLESNAKE MASTER
- SIDEOATS GRAMA
- STIFF GOLDENROD
- TALL GOLDENROD
- VIRGINIA WILDRYE
- BROOMSEDGE BLUESTEM
- CLASPING CONEFLOWER
- HOODED WINDMILL GRASS
- INLAND SEA OATS
- MAXIMILIAN SUNFLOWER
- PLAINS BRISTLEGRASS
- PRAIRIE WILDRYE
- SAND DROPSEED
- SMOOTH WHITE PENSTEMON
- SWAMP MILKWEED
- TEXAS BLUEBONNET
- WACO INDIANGRASS
- WINECUP - PERENNIAL

Blackland Prairie Seed Mix



Thank you for attending!

- Ronny Nelson, BCMA
- 972-750-8386
- ronny@simplyhorticulture.com